

“K” LINE

CONTAINER SPECIFICATIONS

“K” LINE

Contents

20' Dry Freight Containers

1

40' Dry Freight Containers

1

40' HC Containers

2

45' HC Containers

2

20' Refrigerated Containers

3

40' Refrigerated Containers

3

40' HC Refrigerated Containers

4

20' Open Top Containers

5

40' Open Top Containers

5

20' Flat Rack Containers

6

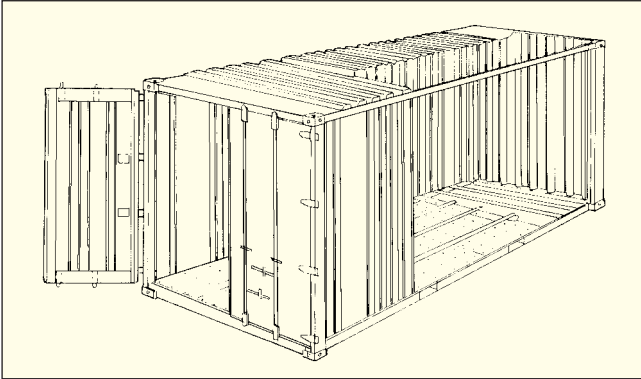
40' Flat Rack Containers

6

40' Plat Form

7

20' Dry Freight Containers



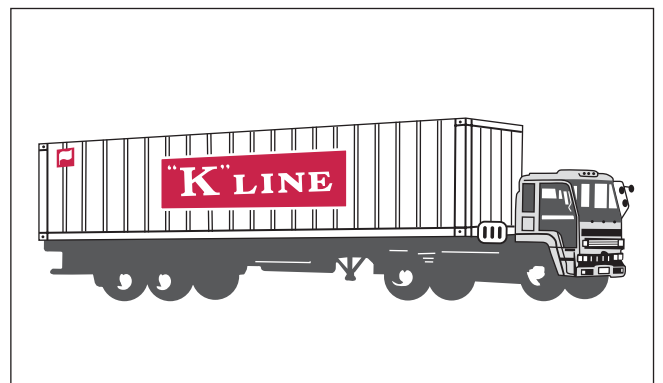
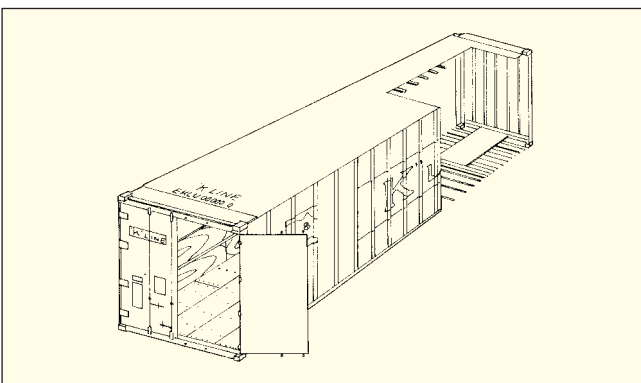
Height	Material	Tare Weight (kg/1bs)	Max* Cargo Cap. (kg/1bs)	Door Opening		Interior Dimensions			Interior Cube (m³/cft)
				Width (mm/ft)	Height (mm/ft)	Length (mm/ft)	Width (mm/ft)	Height (mm/ft)	
8'–6"	Steel	2,300	21,700	2,340	2,280	5,905	2,350	2,392	33.2
		5,071	47,840	7' 8"	7' 6"	19' 4"	7' 9"	7' 10"	1,172
8'–6"	Steel	2,300	27,700**	2,340	2,280	5,905	2,350	2,392	33.2
		5,071	61,070**	7' 8"	7' 6"	19' 4"	7' 9"	7' 10"	1,172

Remarks * : Subject to road and rail weight limitations.

** : Figures were changed from containers produced after July 1998.

: Above are typical figures for this type of containers.

40' Dry Freight Containers

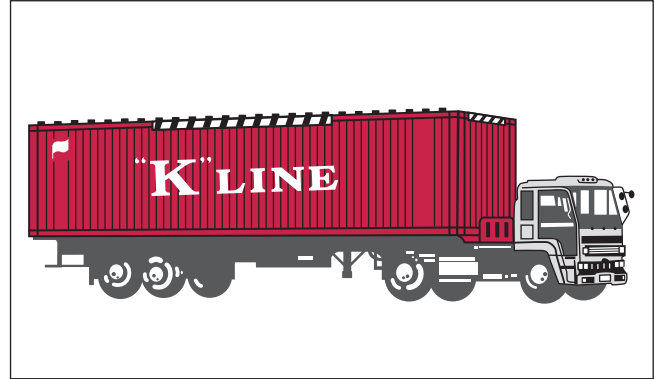
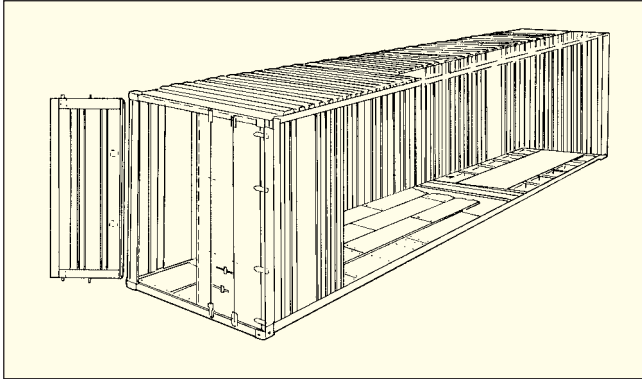


Height	Material	Tare Weight (kg/1bs)	Max* Cargo Cap. (kg/1bs)	Door Opening		Interior Dimensions			Interior Cube (m³/cft)
				Width (mm/ft)	Height (mm/ft)	Length (mm/ft)	Width (mm/ft)	Height (mm/ft)	
8'–6"	Steel	3,860	26,620	2,340	2,280	12,039	2,350	2,392	67.7
		8,510	58,687	7' 8"	7' 6"	39' 6"	7' 9"	7' 10"	2,390

Remarks * : Subject to road and rail weight limitations.

: Above are typical figures for this type of containers.

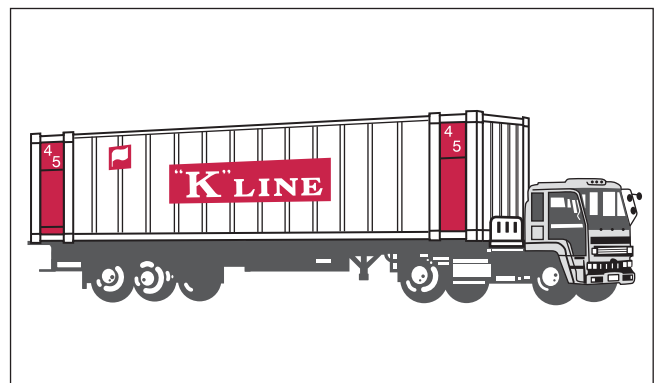
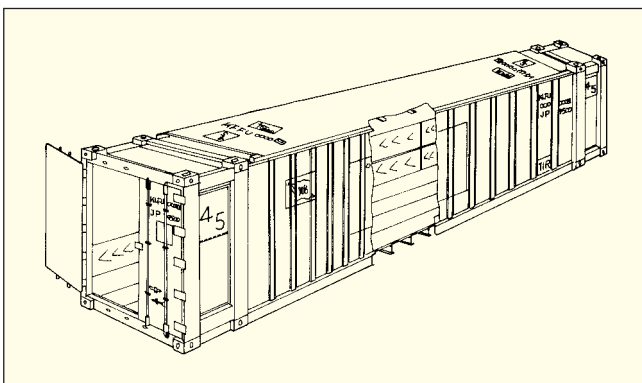
40' HC Containers



Height	Material	Tare Weight (kg/1bs)	Max* Cargo Cap (kg/1bs)	Door Opening		Interior Dimensions			Interior Cube (m³/cft)
				Width (mm/ft)	Height (mm/ft)	Length (mm/ft)	Width (mm/ft)	Height (mm/ft)	
9'– 6"	Steel	3,990 8,796	26,490 58,400	2,340	2,585	12,035	2,350	2,696	76.3
				7' 8"	8' 6"	39' 6"	7' 9"	8' 10"	2,693

Remarks * : Subject to road and rail weight limitations.
: Above are typical figures for this type of containers.

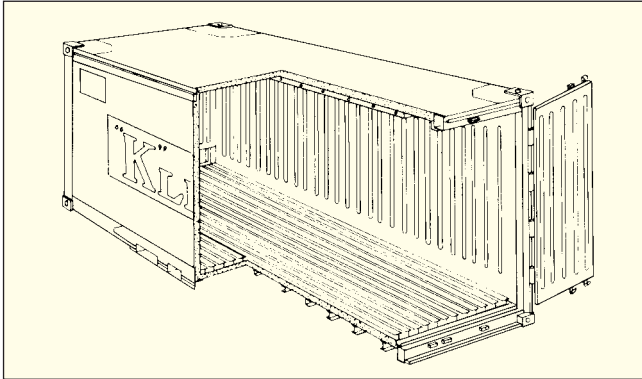
45' HC Containers



Height	Material	Tare Weight (kg/1bs)	Max* Cargo Cap. (kg/1bs)	Door Opening		Inter Dimensions			Interior Cube (m³/cft)
				Width (mm/ft)	Height (mm/ft)	Length (mm/ft)	Width (mm/ft)	Height (mm/ft)	
9'– 6"	Steel	4,850 10,693	25,630 56,504	2,340	2,585	13,558	2,350	2,695	85.9
				7' 8"	8' 6"	44' 6"	7' 9"	8' 10"	3,045

Remarks * : Subject to road and rail weight limitations.
: Above are typical figures for this type of containers.

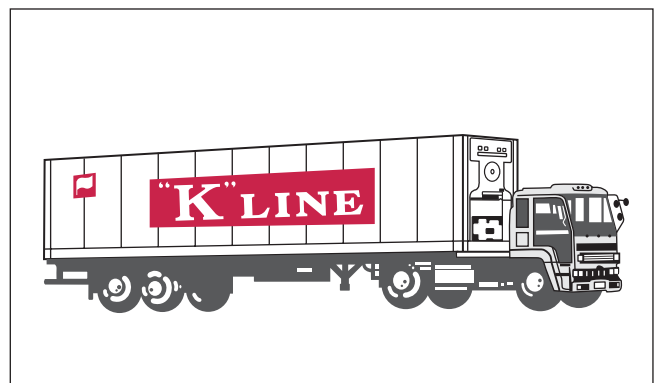
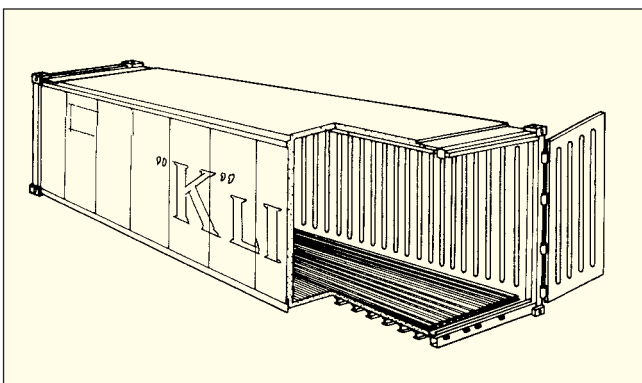
20' Refrigerated Containers



Height	Material	Tare Weight (kg/1bs)	Max* Cargo Cap. (kg/1bs)	Door Opening		Interior Dimensions			Interior Cube (m³/cft)
				Width (mm/ft)	Height (mm/ft)	Length (mm/ft)	Width (mm/ft)	Height (mm/ft)	
8'-6"	Aluminium	2,820	21,180	2,252	2,212	5,545	2,252	2,259	28.2
		6,217	46,694	7' 5"	7' 3"	18' 2"	7' 5"	7' 5"	995
8'-6"	MGSS	2,920	24,080	2,294	2,262	5,498	2,274	2,262	28.3
		6,437	53,086	7' 6"	7' 5"	18' 00"	7' 6"	7' 5"	1,002

Remarks * : Subject to road and rail weight limitations.
: Above are typical figures for this type of containers.

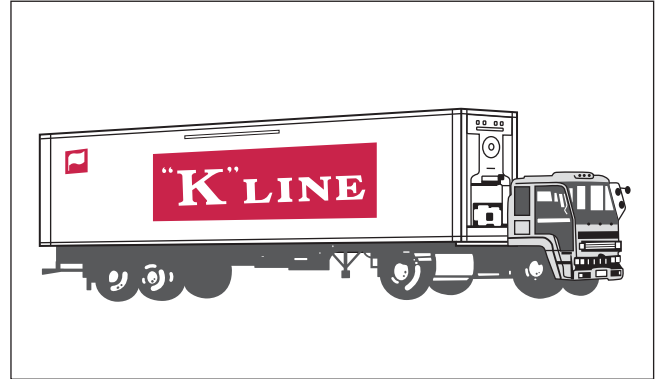
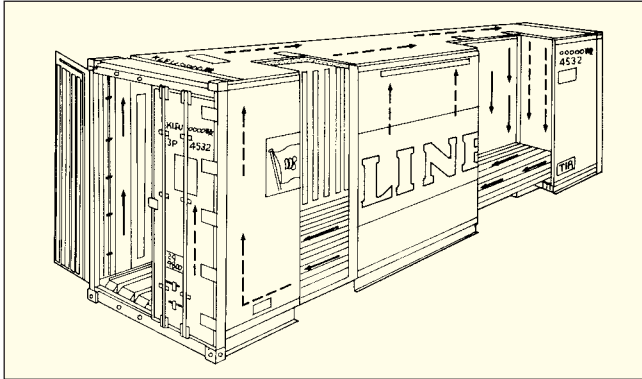
40' Refrigerated Containers



Height	Material	Tare Weight (kg/1bs)	Max* Cargo Cap. (kg/1bs)	Door Opening		Interior Dimensions			Interior Cube (m³/cft)
				Width (mm/ft)	Height (mm/ft)	Length (mm/ft)	Width (mm/ft)	Height (mm/ft)	
8'-6"	Aluminium	4,100	26,380	2,286	2,169	11,679	2,286	2,211	59.0
		9,039	58,158	7' 6"	7' 1"	38' 4"	7' 6"	7' 3"	2,083

Remarks * : Subject to road and rail weight limitations.
: Above are typical figures for this type of containers.

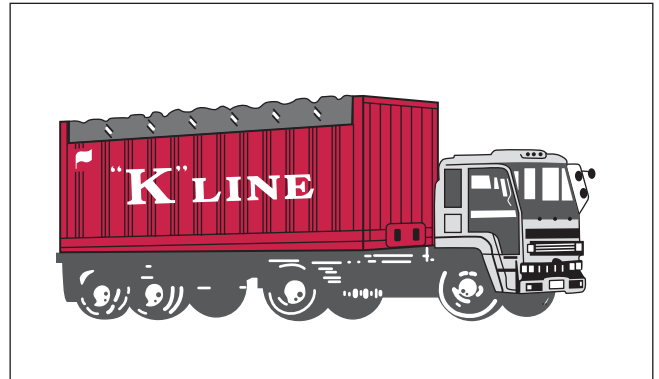
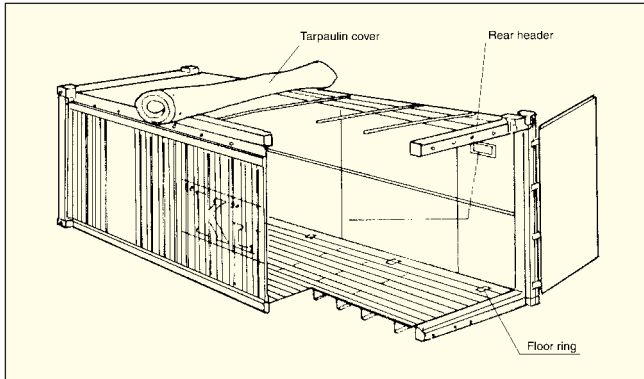
40' HC Refrigerated Containers



Height	Material	Tare Weight (kg/lbs)	Max* Cargo Cap. (kg/lbs)	Door Opening		Interior Dimensions			Interior Cube (m ³ /cft)
				Width (mm/ft)	Height (mm/ft)	Length (mm/ft)	Width (mm/ft)	Height (mm/ft)	
9'-6"	Aluminium	4,550 10,031	25,930 57,166	2,286 7' 6"	2,443 8' 0"	11,672 38' 4"	2,286 7' 6"	2,505 8' 3"	66.8 2,358
9'-6"	MGSS	4,745 10,461	27,755 61,188	2,290 7' 6"	2,569 8' 5"	11,574 38' 00"	2,294 7' 6"	2,557 8' 5"	68.0 2,400

Remarks * : Subject to road and rail weight limitations.
: Above are typical figures for this type of containers.

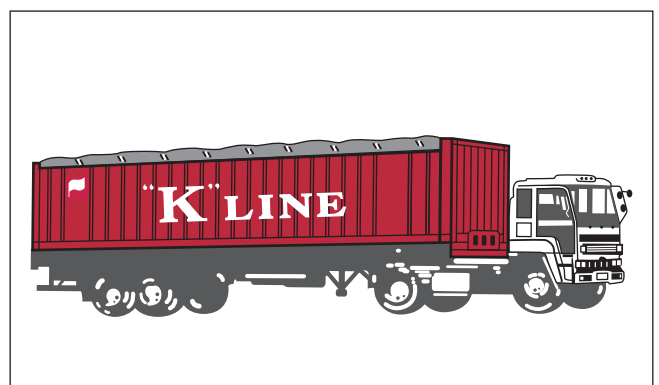
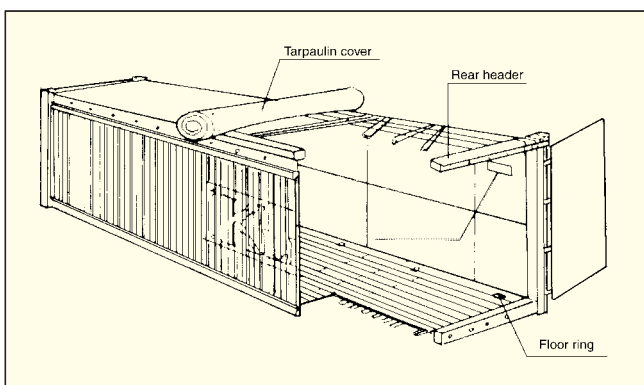
20' Open Top Containers



Height	Material	Tare Weight (kg/1bs)	Max* Cargo Cap. (kg/1bs)	Door Opening		Interior Dimensions			Interior Cube (m³/cft)
				Width (mm/ft)	Height (mm/ft)	Length (mm/ft)	Width (mm/ft)	Height (mm/ft)	
8'–0"	Steel	2,450	21,550	2,338	2,234	5,891	2,350	2,330	32.2
		5,401	47,510	7' 8"	7' 4"	19' 4"	7' 9"	7' 8"	1,137

Remarks * : Subject to road and rail weight limitations.
: Above are typical figures for this type of containers.

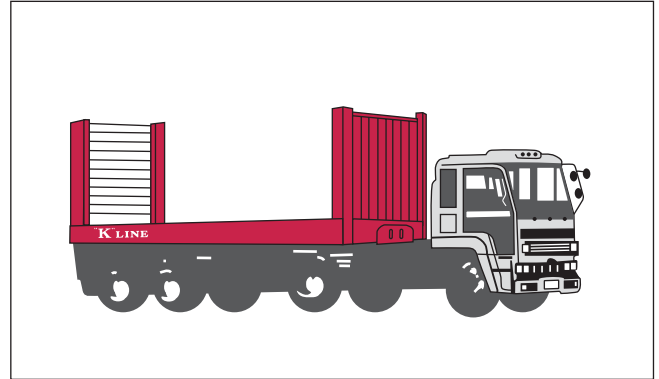
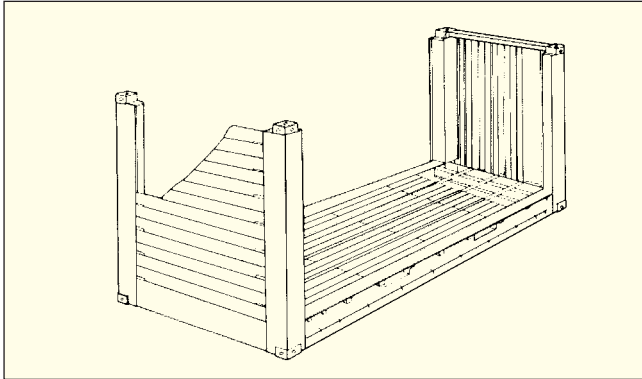
40' Open Top Containers



Height	Material	Tare Weight (kg/1bs)	Max* Cargo Cap. (kg/1bs)	Door Opening		Interior Dimensions			Interior Cube (m³/cft)
				Width (mm/ft)	Height (mm/ft)	Length (mm/ft)	Width (mm/ft)	Height (mm/ft)	
8'–6"	Steel	4,150	26,330	2,338	2,234	12,025	2,350	2,330	65.8
		9,149	58,048	7' 8"	7' 4"	39' 5"	7' 9"	7' 8"	2,323

Remarks * : Subject to road and rail weight limitations.
: Above are typical figures for this type of containers.

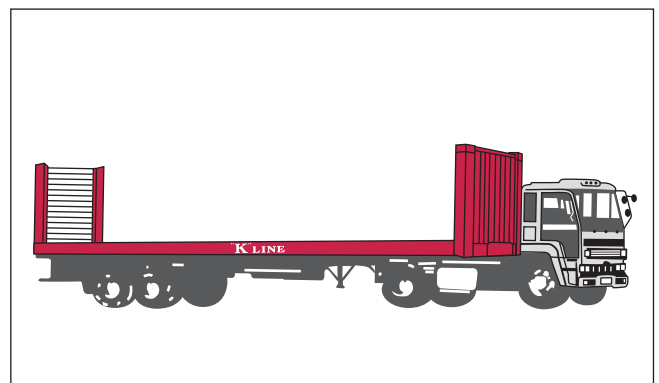
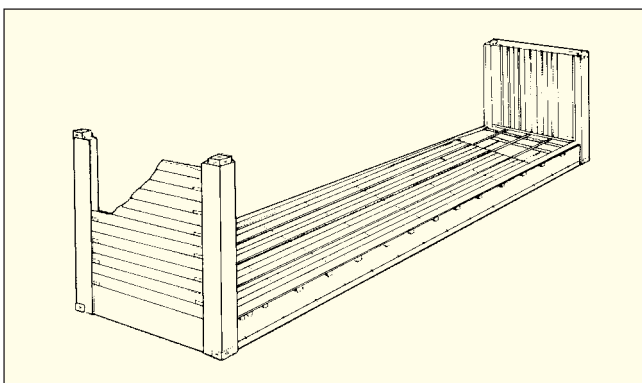
20' Flat Rack Containers



Height	Material	Tare Weight (kg/1bs)	Max* Cargo Cap. (kg/1bs)	Door Opening		Interior Dimensions			Interior Cube (m³/cft)
				Width (mm/ft)	Height (mm/ft)	Length (mm/ft)	Width (mm/ft)	Height (mm/ft)	
8'– 6"	Steel	2,600 5,732	21,400 47,179	—	—	5,954 19' 6"	2,374 7' 9"	2,255 7' 5"	31.9 1,126

Remarks * : Subject to road and rail weight limitations.
: Above are typical figures for this type of containers.

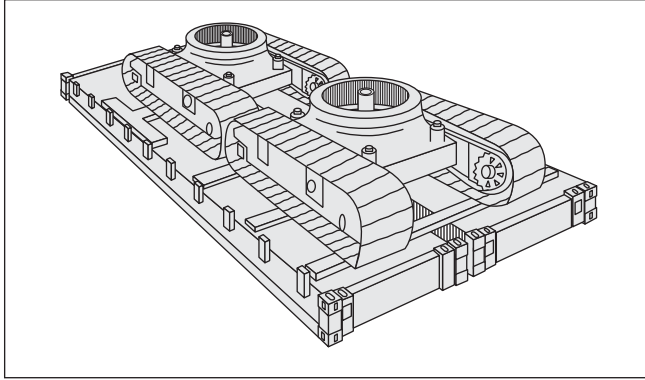
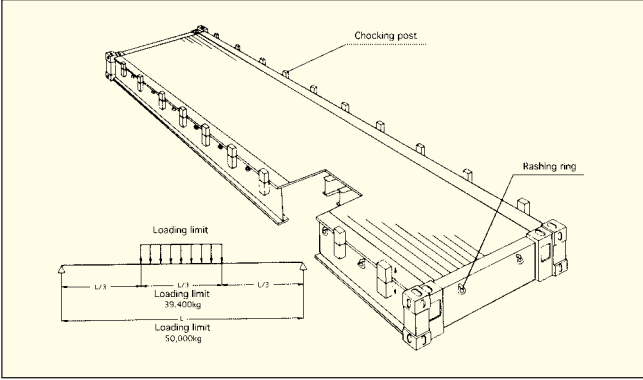
40' Flat Rack Containers



Height	Material	Tare Weight (kg/1bs)	Max* Cargo Cap. (kg/1bs)	Door Opening		Interior Dimensions			Interior Cube (m³/cft)
				Width (mm/ft)	Height (mm/ft)	Length (mm/ft)	Width (mm/ft)	Height (mm/ft)	
8'– 6"	Steel	5,100 11,244	25,380 55,953	—	—	12,072 39' 7"	2,374 7' 9"	1,995 6' 7"	57.1 2,016

Remarks * : Subject to road and rail weight limitations.
: Above are typical figures for this type of containers.

40' Plat Form



Height	Material	Tare Weight (kg/1bs)	Max* Cargo Cap. (kg/1bs)	Door Opening		Interior Dimensions			Interior Cube (m³/cft)
				Width (mm/ft)	Height (mm/ft)	Length (mm/ft)	Width (mm/ft)	Height (mm/ft)	
	Steel	6,160 13,580	50,000 110,231	—	—	12,192 40' 0"	2,438 8' 0"	—	—

Remarks * : Subject to road and rail weight limitations.
 : Above are typical figures for this type of containers.

